

PIMPRI-CHINCHWAD MUNICIPAL CORPORATION

SMART CITY PROPOSAL



SMART CITY CODE

MH-01-PMP



CRISIL
An S&P Global Company



सत्यमेव जयते

Ministry of Urban Development
Government of India

Vision : “RE-defining Pimpri-Chinchwad”

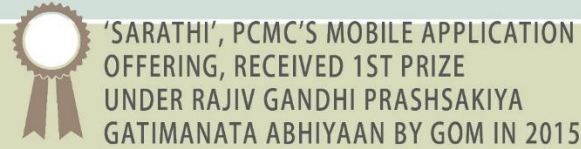
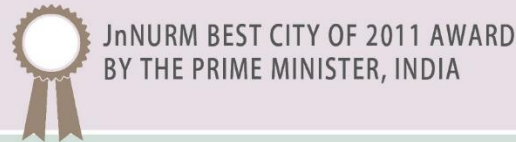
Using the “Smart City” platform, the City now envisages to “Re-define” itself into an attractive, vibrant and liveable destination. Moving beyond providing basic facilities, the City aspires to invest in urban “software” - society, environment, community - to improve the quality of life of its citizens.

Goals :

- [1] Good provision of **CIVIC INFRASTRUCTURE** and amenities
- [2] Culture of **LEVERAGING TECHNOLOGY** in governance
- [3] **STRONG ECONOMIC BASE** of automobile and IT industries
- [4] Legacy of **URBAN PLANNING** and **DEVELOPMENT**
- [5] **ACTIVE CITIZENRY**
- [6] Vibrant **REAL ESTATE**



- [1] **MODAL PREFERENCE** for private vehicles
- [2] **LACK OF CITY ATTRACTIONS** and regional recreational avenues
- [3] Lack of **INTEGRATION** between existing municipal information systems



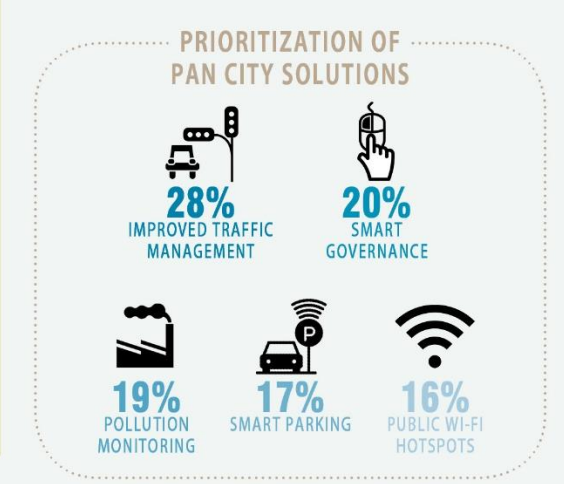
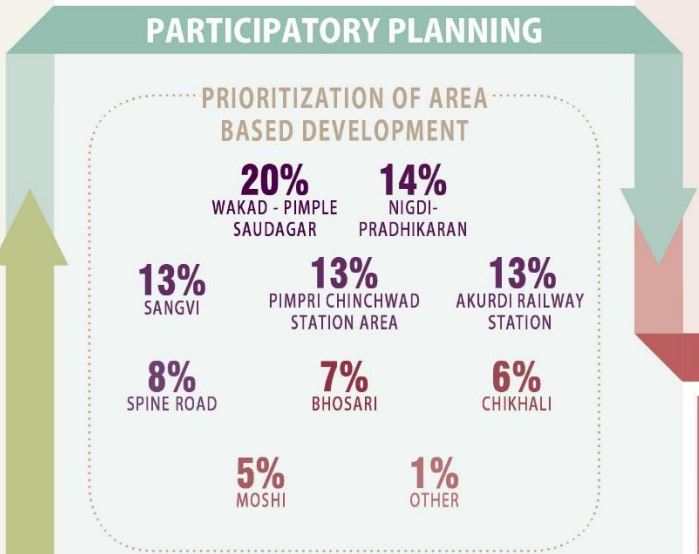
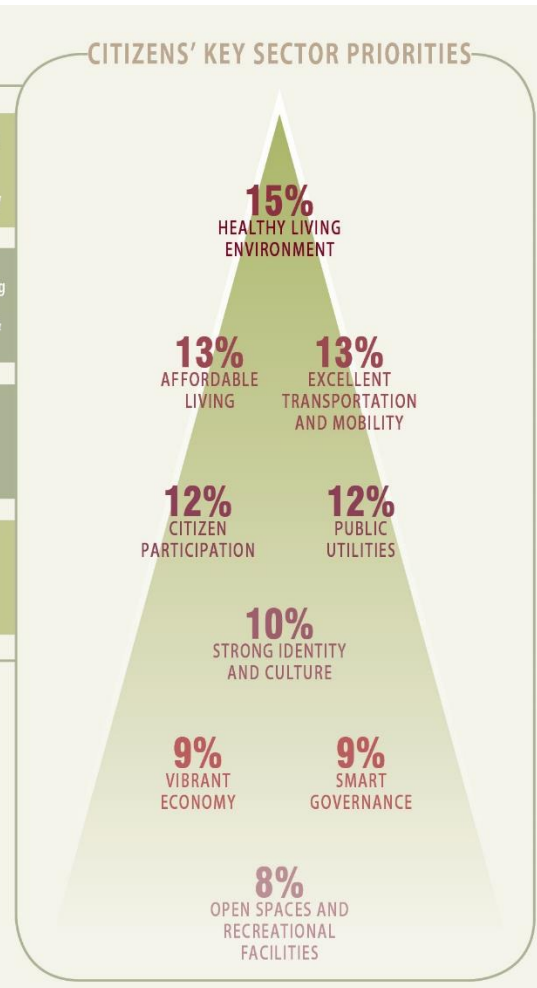
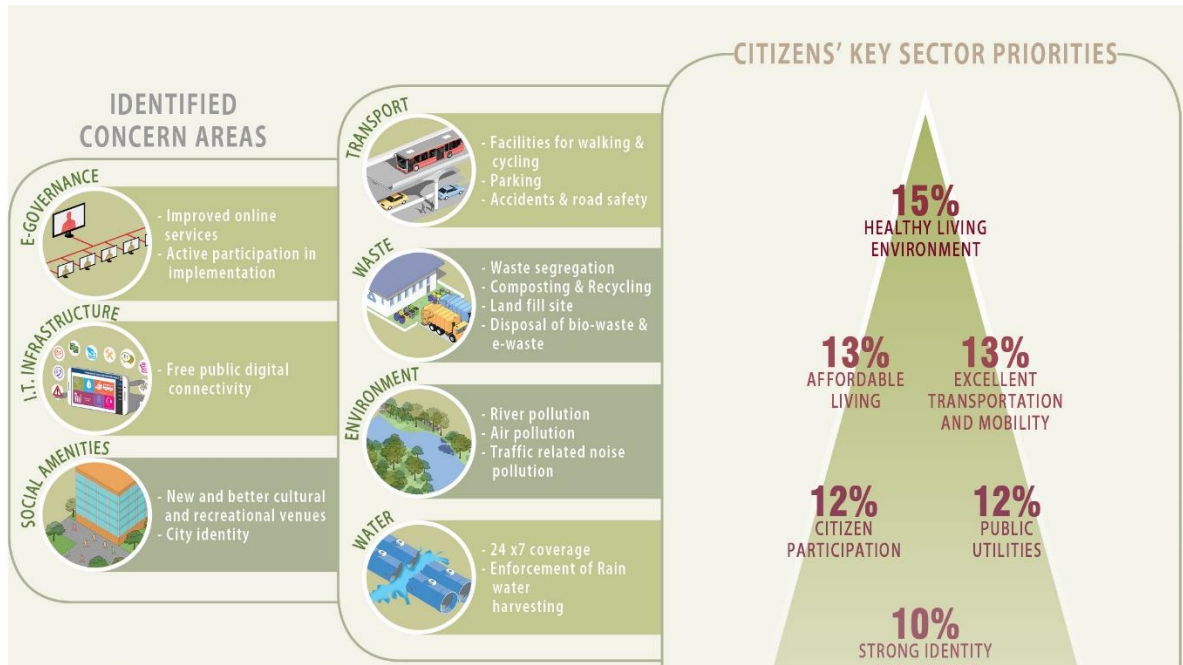
- [1] **GROWING REAL ESTATE DEMAND** fueled by IT and auto industries in the region
- [2] **AVAILABILITY OF LAND** for city expansion
- [3] **IMPROVING** regional and public **TRANSPORT**



- [1] **CONVERSION** of industrial land to residential is leading to **DEPLETION OF ECONOMIC BASE**
- [2] **UNMET ASPIRATIONS** of the emerging creative population
- [3] Environmental **POLLUTION**



Citizen's engagement



- ### LIST OF STAKEHOLDERS
- CENTRAL INSTITUTE OF ROAD TRANSPORT
 - PIMPRI CHINCHWAD NEW TOWN DEVELOPMENT AUTHORITY
 - INSTITUTION OF ENGINEERS (INDIA)
 - SENIOR CITIZENS ASSOCIATIONS
 - JOURNALIST AND MEDIA
 - MAHARATTA CHAMBER OF COMMERCE
 - CREDAI



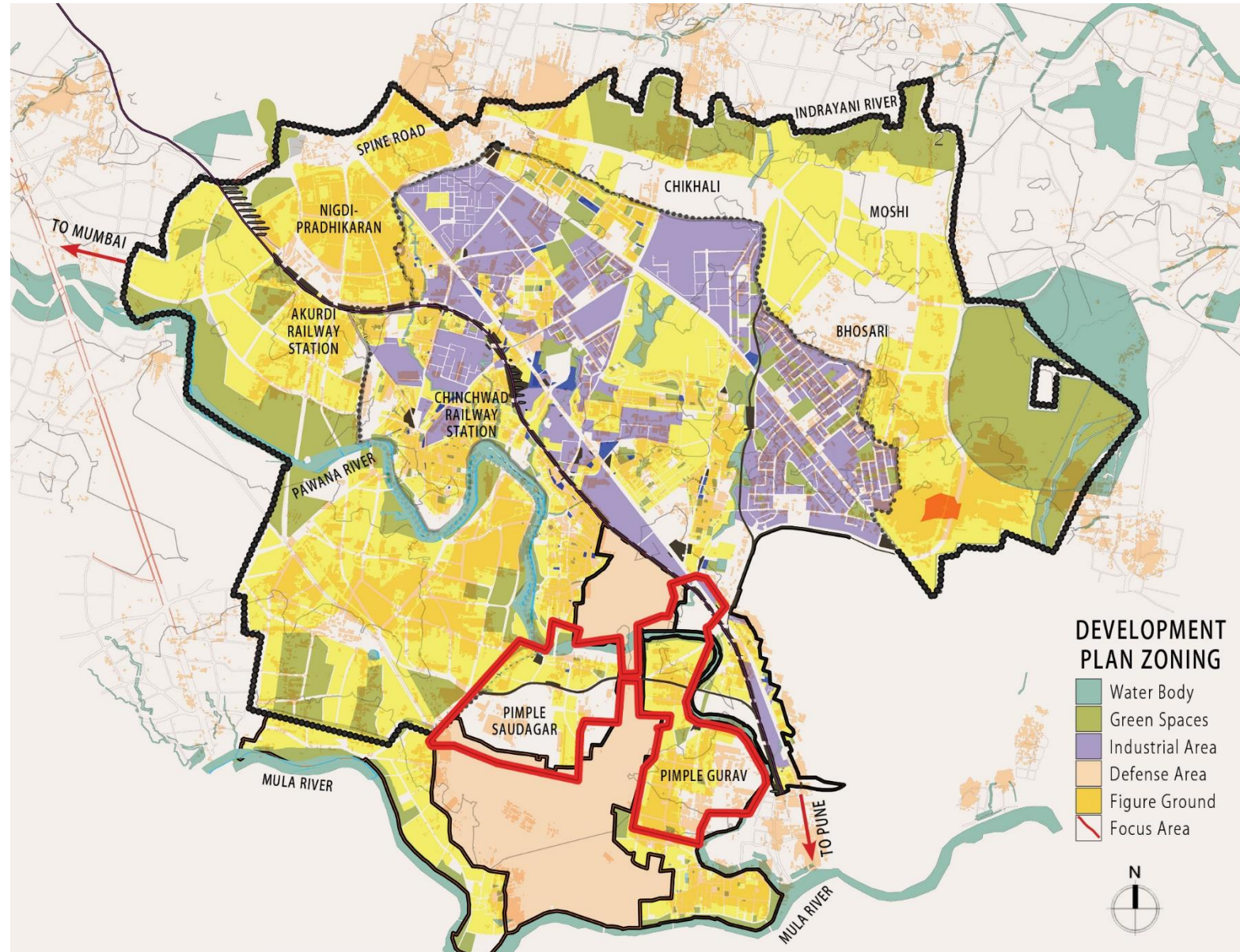
The butterfly is a symbol of transformation – from egg to larva to pupa to the butterfly. It reflects PCMC's own vision to reinvent itself moving beyond the provision of basic facilities. Soaring on the wings of technology (represented by the WiFi wings) and leveraging the existing basic infrastructure (represented by the left half of the leaf), PCMC aims to transform itself into an attractive, vibrant and live-able destination (represented by the green and vibrant right half of the leaf which also resembles the letter 'P' for Pimpri Chinchwad)



ENVISIONING



ABD : “RE-connecting Neighbourhoods”



SELECTED AREA



Selected area : Pimple Saudagar & Pimple Gurav



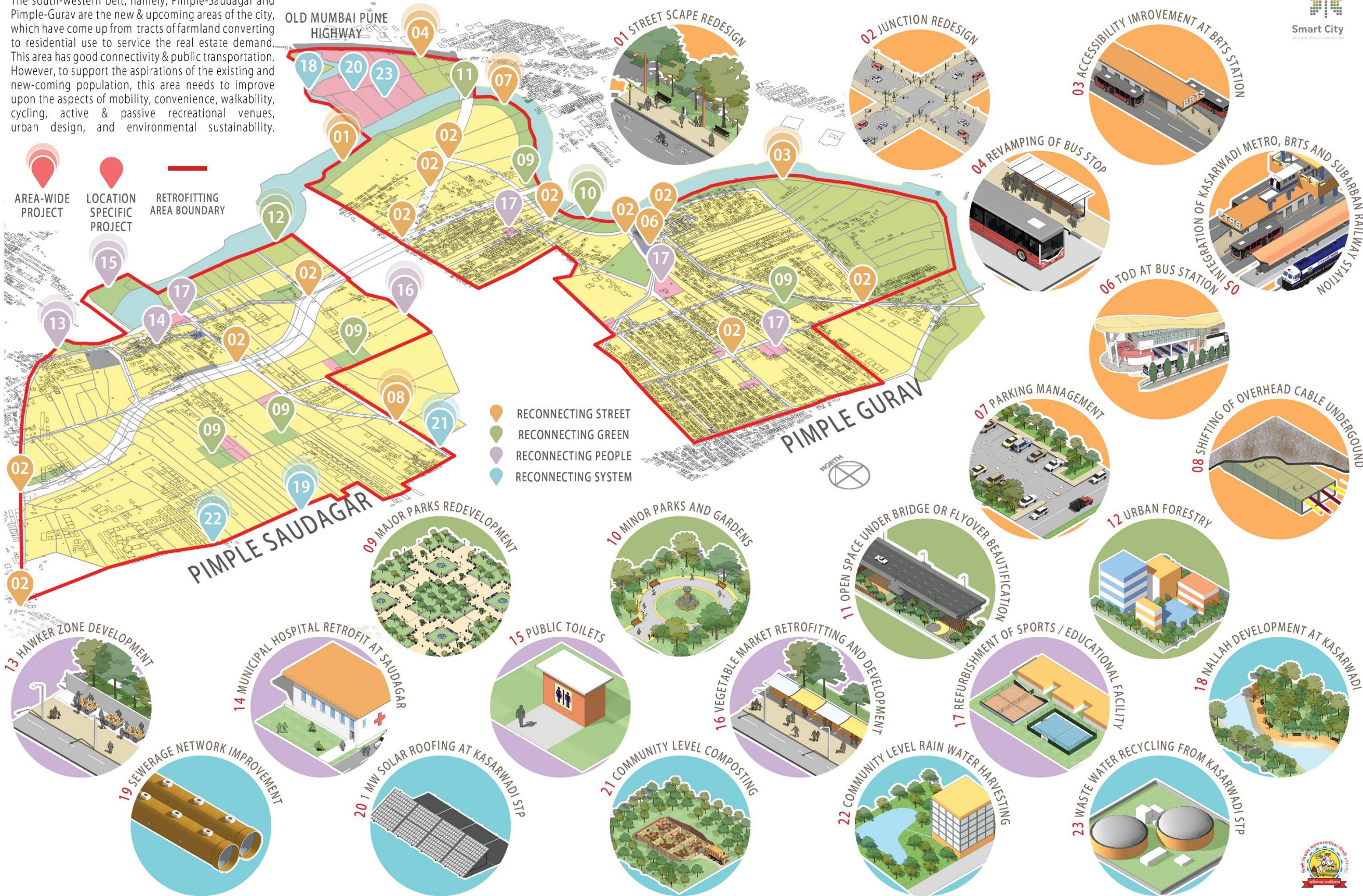
City-wide replication strategy



ABD Profile

ABD : “RE-connecting Neighbourhoods”

The south-western belt, namely, Pimple-Saudagar and Pimple-Gurav are the new & upcoming areas of the city, which have come up from tracts of farmland converting to residential use to service the real estate demand. This area has good connectivity & public transportation. However, to support the aspirations of the existing and new-coming population, this area needs to improve upon the aspects of mobility, convenience, walkability, cycling, active & passive recreational venues, urban design, and environmental sustainability.



ABD : Connected Streets

LESS THAN 7M WIDE ROAD

7,10,12M WIDE ROAD

18-20M WIDE ROAD

30-45M WIDE ROAD

VIEWS

EXISTING CONDITIONS

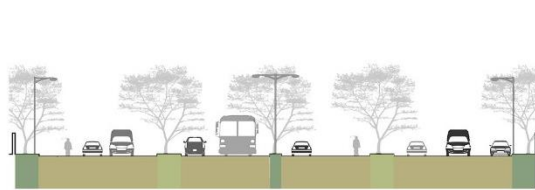


PROPOSED DESIGN

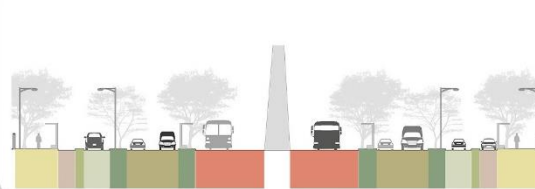
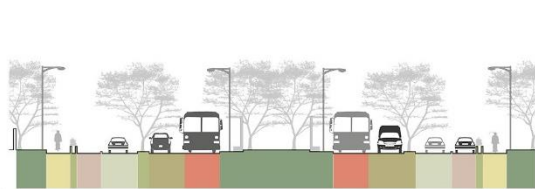
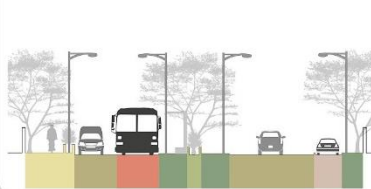
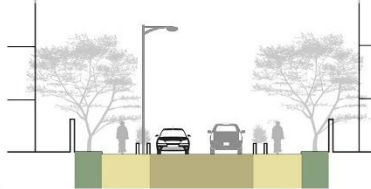


SECTION

EXISTING CONDITIONS



PROPOSED DESIGN

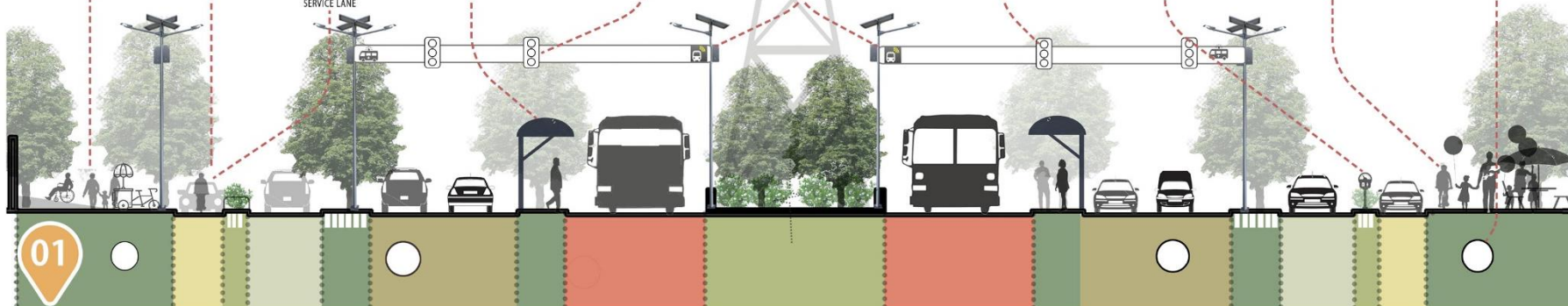
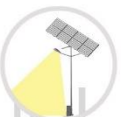


JUNCTION REDESIGN

As part of the street design, the junctions would be re-designed to improve legibility, add landmarks and visual value to the area.

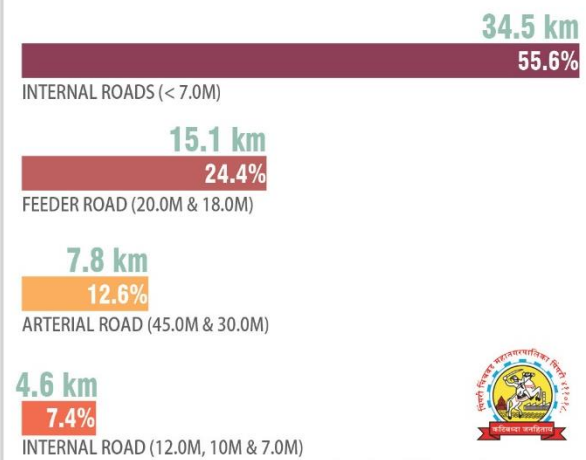


02



- BRTS ROUTE
- FOOTPATH
- CARRIAGE WAY
- SERVICE LANE
- TREE PIT
- CAR PARKING
- CYCLE TRACK

LENGTH OF ROADS



ABD : Connected Streets

INTEGRATION OF KASARWADI METRO, BRTS, & SUBURBAN RAILWAY STATION

As part of the street design, emphasis would also be laid on enhancing access to public transit nodes, so as to encourage use of public transit. The 3 modes – suburban rail station, the BRTS station and the future Metro station at Kasarvadi are proposed to be integrated so as to facilitate smooth interchange between them. Organization of para-transit & private vehicles accessing this interchange would also be undertaken.



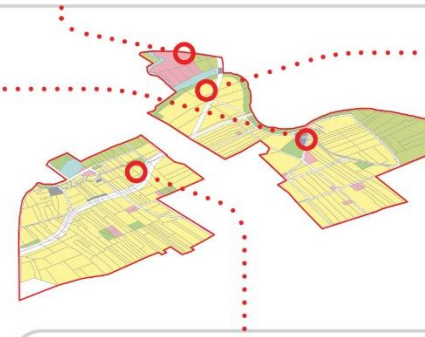
REVAMPING OF BUS STOPS

Similar focus would be given to the BRTS corridor and stations, whereby, the Bus stops would be revamped to make them more attractive and user-friendly.



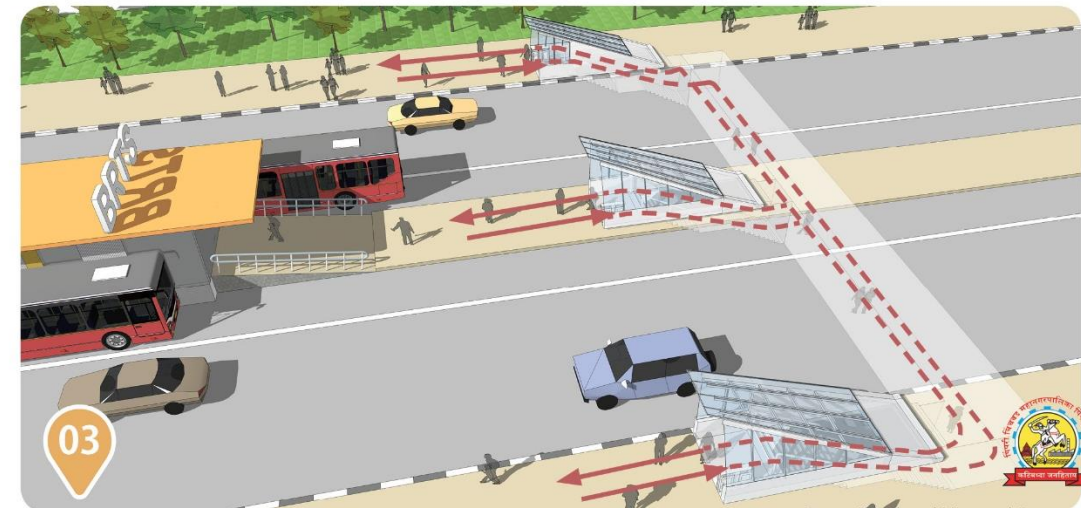
TOD OF BUS STATION , PIMPLE GURAV

The Pimple Gurav bus station is located in an areas which is slowly become a vibrant neighborhood node. Surrounded by the Dinosaur Park and a growing retail presence, this node is proposed to be developed as an attractive activity hub for the area. This plot would be developed as an integrated TOD hub, with well-organized BRTS and local bus stands, as well as a shopping facilities and community activities.



ACCESSIBILITY IMPROVEMENT AT BRTS STATION

The pedestrian access to the centrally placed BRTS stations would be redesigned and improved, such that there is smooth, unhindered and safe access to the bus stops.



ABD : Connected Greens

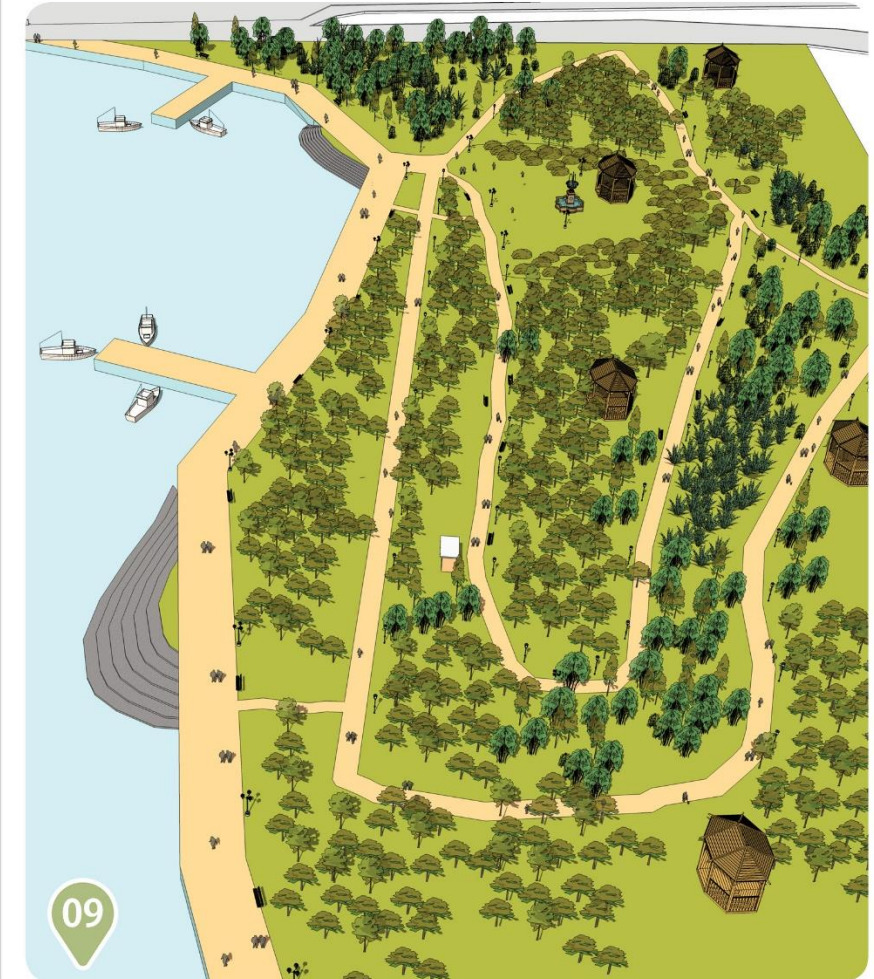
LINEAR PARK

The Nashik Phata Road is a key transportation corridor for this area, along which the BRTS corridor plys. The two green strips - 600 metre long and approximately 30 metre wide - immediately abutting this Road, are proposed to be developed as linear city parks, with several attractive fitness, leisure, educational, cultural and entertainment activities planned within it.



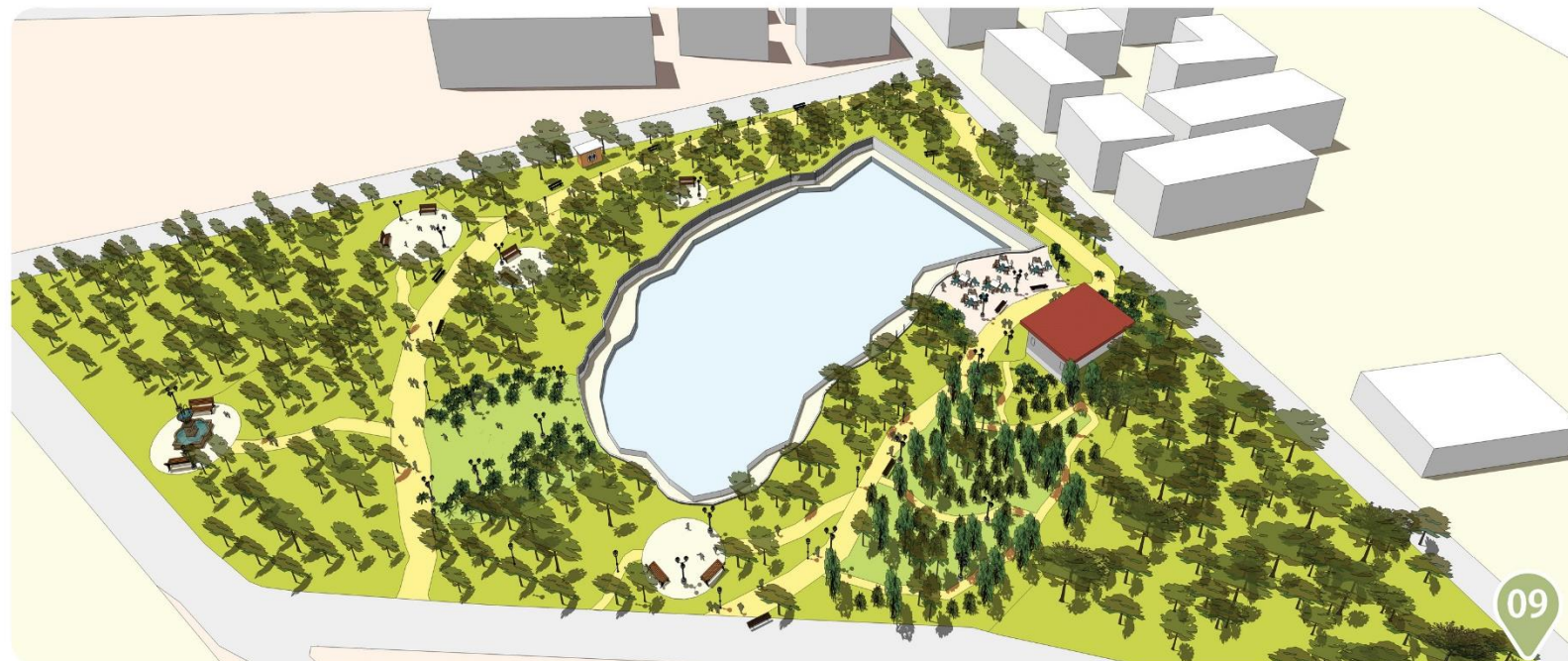
WATERFRONT PARK

The 3 acre reservation along Kate Pimple road, across the river from Pimple Saudagar is proposed to be developed as a waterfront park, with a lushly planted garden and offering information about the City's environmental systems.



MAJOR AND MINOR PARKS

The major and minor garden and playground reservations in the area are proposed to be redesigned so as to add more activities and improve usage. This is proposed to be done through provision of additional facilities for all age groups, improving lighting, security, toilets, paving, landscaping & planting.



ABD : Connected Systems

NALLAH DEVELOPMENT AT KASARWADI

The Kasarwadi Nallah, currently an untrained natural stream, would be cleaned up, soft-lined with wetland vegetation, and developed as a linear recreational green.



18

COMMUNITY LEVEL COMPOSTING

While waste management at plot level is currently being taken care of by the municipal services, attempts will be made to put in place community composting programmes, wherein organic waste from households is diverted in the parks and gardens for community composting. This will double up as an environmental education opportunity for the children and residents, as well as provide compost for local landscaping in the parks and gardens.



21

COMMUNITY LEVEL RAIN WATER HARVESTING

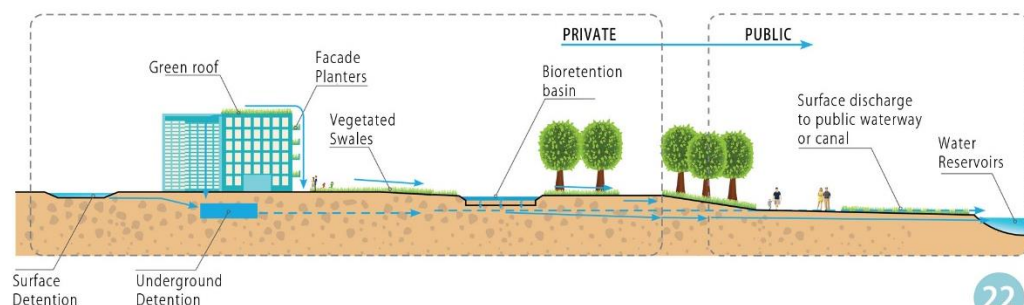
While plot level rain water harvesting is a function of the development control within the city, the interventions in this area would focus on community level rain water harvesting where run-off from roads and public areas would be diverted to parks and gardens where it will be diverted into a water catchment for ground water recharge. This feature will double us as a landscaped water body as well as provide water for irrigation and landscaping.



Run-off from roads and public areas would be diverted to parks and gardens

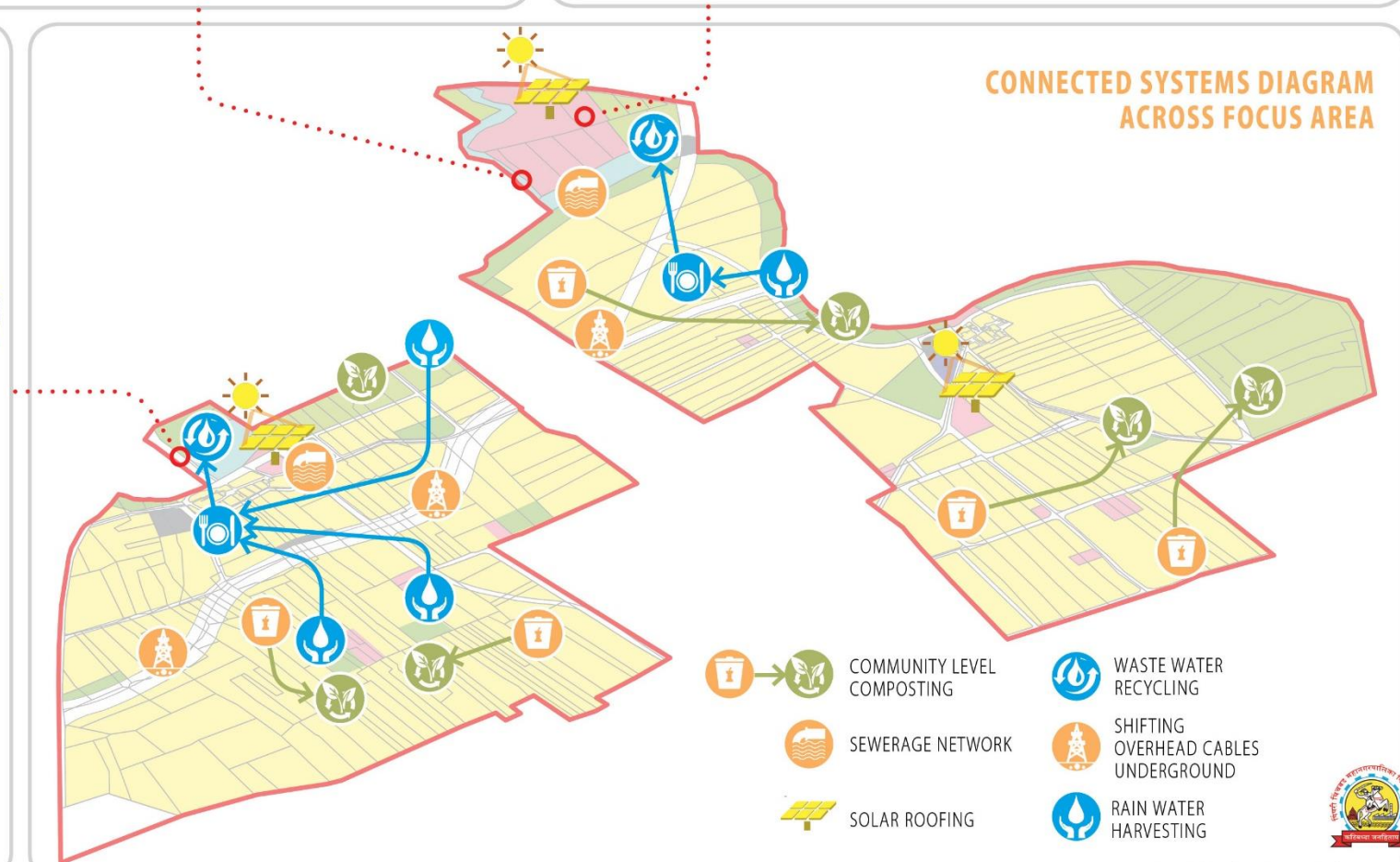
From parks and gardens where it will be diverted into a water catchment for ground water recharge

Finally, runoff is slowed down and cleaner water would flow into our reservoirs.



22

CONNECTED SYSTEMS DIAGRAM ACROSS FOCUS AREA



- COMMUNITY LEVEL COMPOSTING
- SEWERAGE NETWORK
- SOLAR ROOFING
- WASTE WATER RECYCLING
- SHIFTING OVERHEAD CABLES UNDERGROUND
- RAIN WATER HARVESTING



ABD : Connected People

The people focus within the ABD project is two-pronged. Firstly, the social amenities would be revitalized in order to improve usage and access to these facilities. Secondly, the various citizens groups and RWAs would be continually engaged in the implementation of various project in the ABD. Citizens' participation would form the backbone supporting the "re-connecting neighborhoods" efforts.

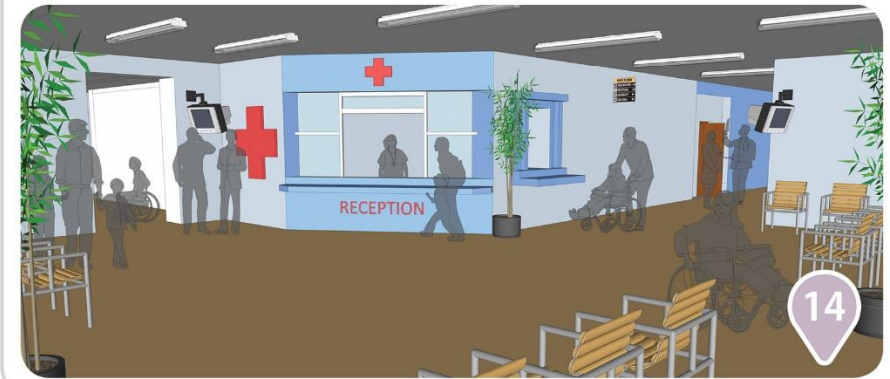
REFURBISHMENT OF SPORTS / EDUCATIONAL FACILITIES

The reservation near Kate Puram chowk would be developed as a state-of-the-art sporting and active recreational facility.



MUNICIPAL HOSPITAL RETROFIT AT SAUDAGAR

The Municipal Hospital would be retrofitted to improve the quality of services.



VEGETABLE MARKET RETROFITING AND DEVELOPMENT

The Vegetable market would be redeveloped to improve the quality of services.



PUBLIC TOILETS

In convergence with the Swachh Bharat Mission several public toilets, along key activity nodes in the areas, would be developed.



HAWKER ZONE DEVELOPMENT

The informal uses along the commercial streets in the area would be organized and regularized into vibrant hawking zones.



Pan City Solutions : Packages

SMART MUNICIPAL CORPORATION

INTELLIGENCE (LIVE DATA CAPTURING)

SEWERAGE
SCADA upgrade and Dynamic energy modelling



WATER SUPPLY
Smart water metering, water quality monitoring, hydraulic & energy modelling



TRAFFIC MANAGEMENT
Smart signals for auto-synchronization



SWM
Vehicle tracking, transfer stations with weighbridges



ESTABLISHMENT LICENSING
RFID-enabled smart licenses



STREET LIGHTING
SCADA-linked LED street lighting with dimmers



CCTV SURVEILLANCE
CCTV network in public places



ENVIRONMENTAL MONITORING
Air quality, noise decibel and water (lakes and rivers) quality monitoring systems



COMMUNICATION

OPTICAL FIBRE CABLING
Linking all PCMC offices and key instrumentation with OFC



SOLAR ROOFING
Solar roofing & net metering at all PCMC buildings



TRAFFIC E-CHALLAN
Number plate recognition, violator identification and e-challan generation



COMMAND & CONTROL CENTRE
Control room with video wall, communications and disaster response capability



SERVICE LEVEL BENCHMARKING
Performance MIS for water, sewerage, SWM and SWD



GIS ENABLED ERP
ERP with Dashboard integration, GIS platform and survey



VIDEO ANALYTICS
Analytics for incident detection



URBAN HEART BENCHMARKING
MIS for public health indicators



RESPONSE

GOALS

2

RE-ENERGIZING CITY GOVERNANCE

3

RE-LINKING MOBILITY NETWORKS

4

RE-THINKING ENVIRONMENTAL SYSTEMS

5

RE-INVESTING IN SOCIAL DEVELOPMENT

6

RE-VITALIZING LOCAL ECONOMIC DEVELOPMENT

SMART CITIZENS



RECREATIONAL AVENUES
Online event management at all PCMC cultural centers, etc.

OUTDOOR



SMART KIOSKS
Citizen information, municipal payment, smart card re-charge and citizen participation



UNIFIED SMART CARD
One card for all transit, health and municipal purposes



PUBLIC E-TOILETS
Stand-alone units with automatic cleaning and incident alert capability



PUBLIC WIFI HOTSPOTS
Free limited usage public WiFi

TRANSIT



BRTS
Vehicle tracking, PIS along with app for bus ETA



UNIQUE SMART ADDRESS
Generation of unique number & geo-tag for all property



PARKING
Smart on-street parking meters, smart off-street MLCP



BICYCLE SHARING
Bicycle rental hubs with electronic payment feature



ONE TRANSIT APP
Unified app for all train, bus, parking & bicycle information

ECONOMIC DEVELOPMENT



SKILL DEVELOPMENT CENTRE
Upgrade of ITIs to expand offerings



MUNICIPAL E-CLASSROOMS
Projectors, e-tablets and online educational curriculum



START-UP INCUBATION CENTRE
Single Window Investor Desk
Incubation Centers at old LBT building and Auto-Cluster Building



ONLINE PATIENT SERVICES
Expanding patient medical e-record to all PCMC hospitals



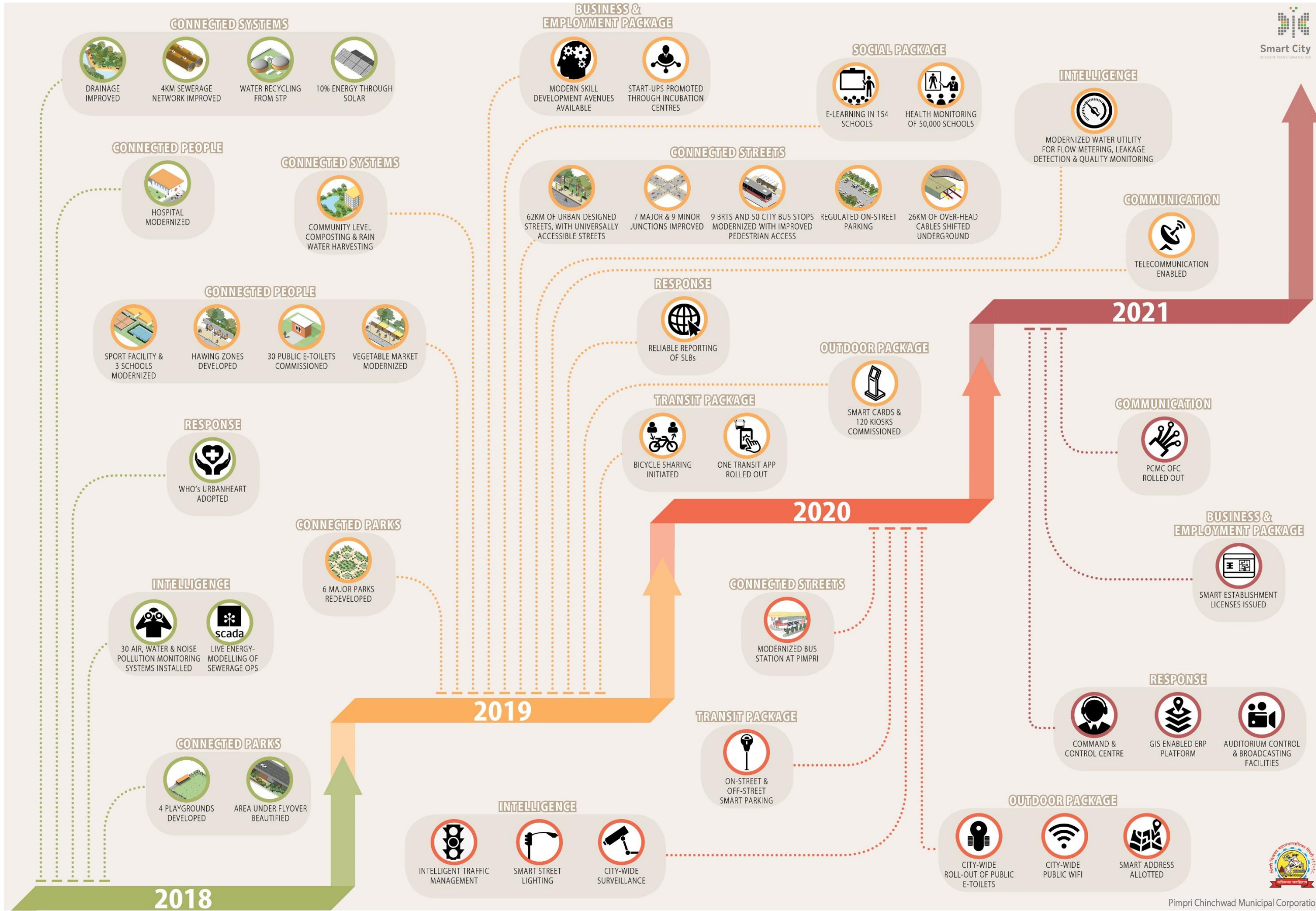
SCHOOL HEALTH MONITORING
MIS on health-related aspects of school students

SOCIAL DEVELOPMENT



CYBER SECURITY
IEC to promote awareness

SCP Implementation Plan



CONNECTED SYSTEMS

- DRAINAGE IMPROVED
- 4KM SEWERAGE NETWORK IMPROVED
- WATER RECYCLING FROM STP
- 10% ENERGY THROUGH SOLAR

CONNECTED PEOPLE

- HOSPITAL MODERNIZED

CONNECTED SYSTEMS

- COMMUNITY LEVEL COMPOSTING & RAIN WATER HARVESTING

CONNECTED PEOPLE

- SPORT FACILITY & 3 SCHOOLS MODERNIZED
- HAWING ZONES DEVELOPED
- 30 PUBLIC E-TOILETS COMMISSIONED
- VEGETABLE MARKET MODERNIZED

RESPONSE

- WHO'S URBANHEART ADOPTED

INTELLIGENCE

- 30 AIR, WATER & NOISE POLLUTION MONITORING SYSTEMS INSTALLED
- LIVE ENERGY-MODELLING OF SEWERAGE OPS

CONNECTED PARKS

- 4 PLAYGROUNDS DEVELOPED
- AREA UNDER FLYOVER BEAUTIFIED

2018

BUSINESS & EMPLOYMENT PACKAGE

- MODERN SKILL DEVELOPMENT AVENUES AVAILABLE
- START-UPS PROMOTED THROUGH INCUBATION CENTRES

SOCIAL PACKAGE

- E-LEARNING IN 154 SCHOOLS
- HEALTH MONITORING OF 50,000 SCHOOLS

INTELLIGENCE

- MODERNIZED WATER UTILITY FOR FLOW METERING, LEAKAGE DETECTION & QUALITY MONITORING

COMMUNICATION

- TELECOMMUNICATION ENABLED

CONNECTED STREETS

- 62KM OF URBAN DESIGNED STREETS, WITH UNIVERSALLY ACCESSIBLE STREETS
- 7 MAJOR & 9 MINOR JUNCTIONS IMPROVED
- 9 BRTS AND 50 CITY BUS STOPS MODERNIZED WITH IMPROVED PEDESTRIAN ACCESS
- REGULATED ON-STREET PARKING
- 26KM OF OVER-HEAD CABLES SHIFTED UNDERGROUND

RESPONSE

- RELIABLE REPORTING OF SLBs

OUTDOOR PACKAGE

- SMART CARDS & 120 KIOSKS COMMISSIONED

TRANSIT PACKAGE

- BICYCLE SHARING INITIATED
- ONE TRANSIT APP ROLLED OUT

2020

2021

COMMUNICATION

- PCMC OFC ROLLED OUT

BUSINESS & EMPLOYMENT PACKAGE

- SMART ESTABLISHMENT LICENSES ISSUED

CONNECTED STREETS

- MODERNIZED BUS STATION AT PIMPRI

RESPONSE

- COMMAND & CONTROL CENTRE
- GIS ENABLED ERP PLATFORM
- AUDITORIUM CONTROL & BROADCASTING FACILITIES

TRANSIT PACKAGE

- ON-STREET & OFF-STREET SMART PARKING

OUTDOOR PACKAGE

- CITY-WIDE ROLL-OUT OF PUBLIC E-TOILETS
- CITY-WIDE PUBLIC WIFI
- SMART ADDRESS ALLOTTED

INTELLIGENCE

- INTELLIGENT TRAFFIC MANAGEMENT
- SMART STREET LIGHTING
- CITY-WIDE SURVEILLANCE



Structure of SPV

SMART CITY SPV FOR PCMC

State Government has passed G.R. No. SmartC-2016/CR1503/UD-23 issued on 9th January, 2017 approved the formation of the Smart City SPV for PCMC with 15 directors and a 50:50 share-holding structure between State and PCMC



BOARD OF DIRECTORS

CHAIRMAN
MR. NITIN KAREER
PRINCIPAL SECRETARY
(UDD, GOVERNMENT OF MAHARASHTRA)



A

PCMC



B

GOVERNMENT OF MAHARASHTRA



C

GOVERNMENT OF INDIA



D

INDEPENDENT DIRECTORS



E

FULL-TIME CEO



F

EXECUTIVE COMMITTEE

G

ADVISORY COMMITTEE



A

MAYOR

DEPUTY MAYOR

CHAIRMAN OF STANDING COMMITTEE

LEADER OF HOUSE

LEADER OF OPPOSITION

2 CORPORATORS

COMMISSIONER, PCMC



B

DIVISIONAL COMMISSIONER, PUNE

POLICE COMMISSIONER, PUNE

GM OF PMPML (BUS SERVICE)



C

NOMINEE



D

2 NOS. FROM MINISTRY OF CORPORATE AFFAIRS' DATABASE



E

assisted by
CHIEF FINANCIAL OFFICER
COMPANY SECRETARY
CHIEF INFORMATION & OPERATIONS OFFICER

PUBLIC RELATIONS OFFICER

CHIEF ENGINEER

CHIEF PLANNER



F

CHAIRMAN

CEO

CFO

G

EXPERTS

NGOs

ACADEMICIANS

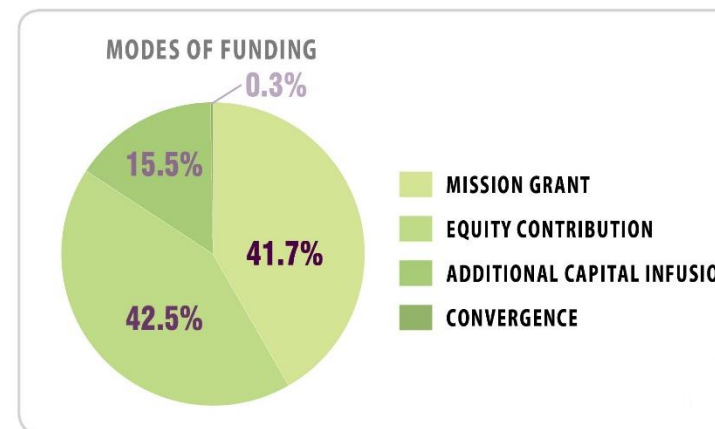
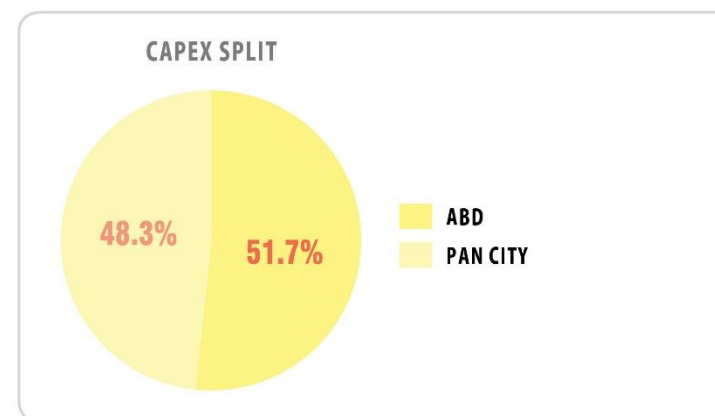
etc.



SPV Finance

PROJECT	TOTAL COST	CAPEX PHASING					CONVERGENCE	
		2018-19	2019-20	2020-21	2021-22	2022-23	SCHEME	AMT.
A1 Connected Streets	361.6	178.3	178.3	5.0	0.0	0.0	-	0.0
A2 Connected Parks	92.8	66.4	26.4	0.0	0.0	0.0	-	0.0
A3 Connected Systems	58.0	48.8	9.3	0.0	0.0	0.0	-	0.0
A4 Connected People	53.0	27.5	25.5	0.0	0.0	0.0	-	0.0
TOTAL ABD CAPEX	565.4	321.0	239.5	5.0	0.0	0.0		0.0
P1 Intelligence (Live Data Capture)	194.1	82.4	64.4	47.3	0.0	0.0	-	0.0
P2 Communication	40.0	7.5	17.5	7.5	7.5	0.0	-	0.0
P3 Response	148.0	29.3	32.9	42.9	42.9	0.0	-	0.0
P4 Outdoor Package	54.0	20.0	20.0	14.0	0.0	0.0	-	3.2
P5 Transit Package	67.0	24.2	26.2	16.7	0.0	0.0	-	0.0
P6 Business & Employment Package	12.0	5.0	5.7	0.7	0.7	0.0	-	0.0
P7 Social Package	14.0	5.0	9.0	0.0	0.0	0.0	-	0.0
TOTAL PAN-CITY CAPEX	529.1	173.3	175.6	129.1	51.1	0.0		3.2
Consulting	54.7	21.9	13.7	8.2	5.5	5.5		0.0
GRAND TOTAL	1149.2	516.1	428.8	142.3	56.6	5.5		3.2

CASH FLOW STATEMENT - SPV	2018-19	2019-20	2020-21	2021-22	2022-23	Total
INFLOWS						
Mission Grant - GoI	196.0	98.0	98.0	98.0	0.0	490.0
Equity contribution - GoM	75.0	75.0	50.0	50.0	0.0	250.0
Equity contribution - PCMC	75.0	75.0	50.0	50.0	0.0	250.0
Additional Capital infusion - PCMC	91.1	91.1	0.0	0.0	0.0	182.2
Soft Loan - PCMC	84.0	91.8	0.0	0.0	0.0	175.8
Convergence - AMRUT	0.0	3.2	0.0	0.0	0.0	3.2
Total	521.1	434.1	198.0	198.0	0.0	1351.2
OUTFLOWS						
Capital Expenditure	494.3	415.1	134.1	51.1	0.0	1094.5
Establishment Expenditure	2.0	2.1	2.1	2.1	2.1	10.5
Administrative Expenditure	3.0	3.2	3.2	3.2	3.2	15.7
Consultancy fees	21.9	13.7	8.2	5.5	5.5	54.7
Loan repayment	0.0	0.0	50.4	125.4	0.0	175.8
Total	521.1	434.1	198.0	187.2	10.8	1351.2
CLOSING CASH BALANCE	0.0	0.0	0.0	10.8	0.0	0.0
NET CASH FLOW	0.0	0.0	0.0	10.8	-10.8	0.0



ABD Capex

PROJECT	TOTAL COST	CAPEX PHASING					CONVERGENCE	
		2018-19	2019-20	2020-21	2021-22	2022-23	SCHEME	AMT.
A1 Connected Streets	361.6	178.3	178.3	5.0	0.0	0.0	-	0.0
- Street-scaping	265.3	132.7	132.7	0.0	0.0	0.0	-	0.0
- Junction Improvement	5.3	2.7	2.7	0.0	0.0	0.0	-	0.0
Accessibility Improvements to BRTS stations	10.0	5.0	5.0	0.0	0.0	0.0	-	0.0
BRTS stops and Bus stops Improvement	20.0	10.0	10.0	0.0	0.0	0.0	-	0.0
Multi-modal integration at Kasarvadi Railway, BRTS and Mero Stations	30.0	15.0	15.0	0.0	0.0	0.0	-	0.0
TOD at Pimple Gurav Bus Station	15.0	5.0	5.0	5.0	0.0	0.0	-	0.0
- Parking management	1.0	0.5	0.5	0.0	0.0	0.0	-	0.0
- Shifting electric cables underground	15.0	7.5	7.5	0.0	0.0	0.0	-	0.0
A2 Connected Parks	92.8	66.4	26.4	0.0	0.0	0.0	-	0.0
- Major Parks Redevelopment	52.8	26.4	26.4	0.0	0.0	0.0	-	0.0
- Playground Improvement	25.0	25.0	0.0	0.0	0.0	0.0	-	0.0
- Urban forestry	10.0	10.0	0.0	0.0	0.0	0.0	-	0.0
- Beautification of space under flyover	5.0	5.0	0.0	0.0	0.0	0.0	-	0.0
A3 Connected Systems	58.0	48.8	9.3	0.0	0.0	0.0	-	0.0
- Storm water drainage development	10.0	10.0	0.0	0.0	0.0	0.0	-	0.0
- Sewerage network improvement	10.0	10.0	0.0	0.0	0.0	0.0	-	0.0
- Recycling of waste water	5.0	5.0	0.0	0.0	0.0	0.0	-	0.0
- Solar power generation	15.0	15.0	0.0	0.0	0.0	0.0	-	0.0
- Community level composting	0.5	0.0	0.5	0.0	0.0	0.0	-	0.0
- Community level rainwater harvesting	17.5	8.8	8.8	0.0	0.0	0.0	-	0.0
A4 Connected People	53.0	27.5	25.5	0.0	0.0	0.0	-	0.0
- Refurbishment of sports and educational facilities	25.0	12.5	12.5	0.0	0.0	0.0	-	0.0
- Hawking zone development	10.0	5.0	5.0	0.0	0.0	0.0	-	0.0
- Retrofitting municipal hospital	10.0	10.0	0.0	0.0	0.0	0.0	-	0.0
- Installation of public e-toilets (30 no's)	3.0	0.0	3.0	0.0	0.0	0.0	-	0.0
- Development of vegetable market	5.0	0.0	5.0	0.0	0.0	0.0	-	0.0
TOTAL ABD CAPEX	565.4	321.0	239.5	5.0	0.0	0.0		0.0

Pan City Capex

PROJECT	TOTAL COST	CAPEX PHASING					CONVERGENCE	
		2018-19	2019-20	2020-21	2021-22	2022-23	SCHEME	AMT.
P1 Intelligence (Live Data Capture)	194.1	82.4	64.4	47.3	0.0	0.0	-	0.0
- Smart Water Supply	34.1	17.1	17.1	0.0	0.0	0.0	-	0.0
- Smart Sewerage	3.0	3.0	0.0	0.0	0.0	0.0	-	0.0
- Smart Traffic Management	42.0	14.0	14.0	14.0	0.0	0.0	-	0.0
- Smart Street-lighting	50.0	16.7	16.7	16.7	0.0	0.0	-	0.0
- Environmental Monitoring	15.0	15.0	0.0	0.0	0.0	0.0	-	0.0
- City Surveillance	50.0	16.7	16.7	16.7	0.0	0.0	-	0.0
P2 Communication	40.0	7.5	17.5	7.5	7.5	0.0	-	0.0
- Optical Fiber Cabling	30.0	7.5	7.5	7.5	7.5	0.0	-	0.0
- Telecommunication systems	10.0	0.0	10.0	0.0	0.0	0.0	-	0.0
P3 Response	148.0	29.3	32.9	42.9	42.9	0.0	-	0.0
- Command & Control Center	25.0	0.0	0.0	12.5	12.5	0.0	-	0.0
- GIS-enabled Enterprise Resource Planning	95.0	23.8	23.8	23.8	23.8	0.0	-	0.0
- Municipal Service Level Benchmarking	5.0	2.5	2.5	0.0	0.0	0.0	-	0.0
- UrbanHEART Benchmarking	3.0	3.0	0.0	0.0	0.0	0.0	-	0.0
-Auditorium Control and Broadcasting Facility	20.0	0.0	6.7	6.7	6.7	0.0	-	0.0
P4 Outdoor Package	54.0	20.0	20.0	14.0	0.0	0.0	-	3.2
- Smart Kiosks	12.0	6.0	6.0	0.0	0.0	0.0	-	0.0
- Public E-toilets	10.0	3.3	3.3	3.3	0.0	0.0	SBM	3.2
- Public WiFi Hotspots	27.0	9.0	9.0	9.0	0.0	0.0	-	0.0
- Unique Smart Addressing	5.0	1.7	1.7	1.7	0.0	0.0	-	0.0
P5 Transit Package	67.0	24.2	26.2	16.7	0.0	0.0	-	0.0
- Smart Parking including multi level car parks	50.0	16.7	16.7	16.7	0.0	0.0	-	0.0
- Bicycle Sharing	15.0	7.5	7.5	0.0	0.0	0.0	-	0.0
- One Transit App	2.0	0.0	2.0	0.0	0.0	0.0	-	0.0
P6 Business & Employment Package	12.0	5.0	5.7	0.7	0.7	0.0	-	0.0
- Skill Development Centers	5.0	2.5	2.5	0.0	0.0	0.0	-	0.0
- Start-Up Incubation Centers	5.0	2.5	2.5	0.0	0.0	0.0	-	0.0
- Establishment Licensing	2.0	0.0	0.7	0.7	0.7	0.0	-	0.0
P7 Social Package	14.0	5.0	9.0	0.0	0.0	0.0	-	0.0
- Municipal E-Classrooms	4.0	0.0	4.0	0.0	0.0	0.0	-	0.0
- School Health Monitoring	10.0	5.0	5.0	0.0	0.0	0.0	-	0.0
TOTAL PAN-CITY CAPEX	529.1	173.3	175.6	129.1	51.1	0.0		3.2

Thank You !

